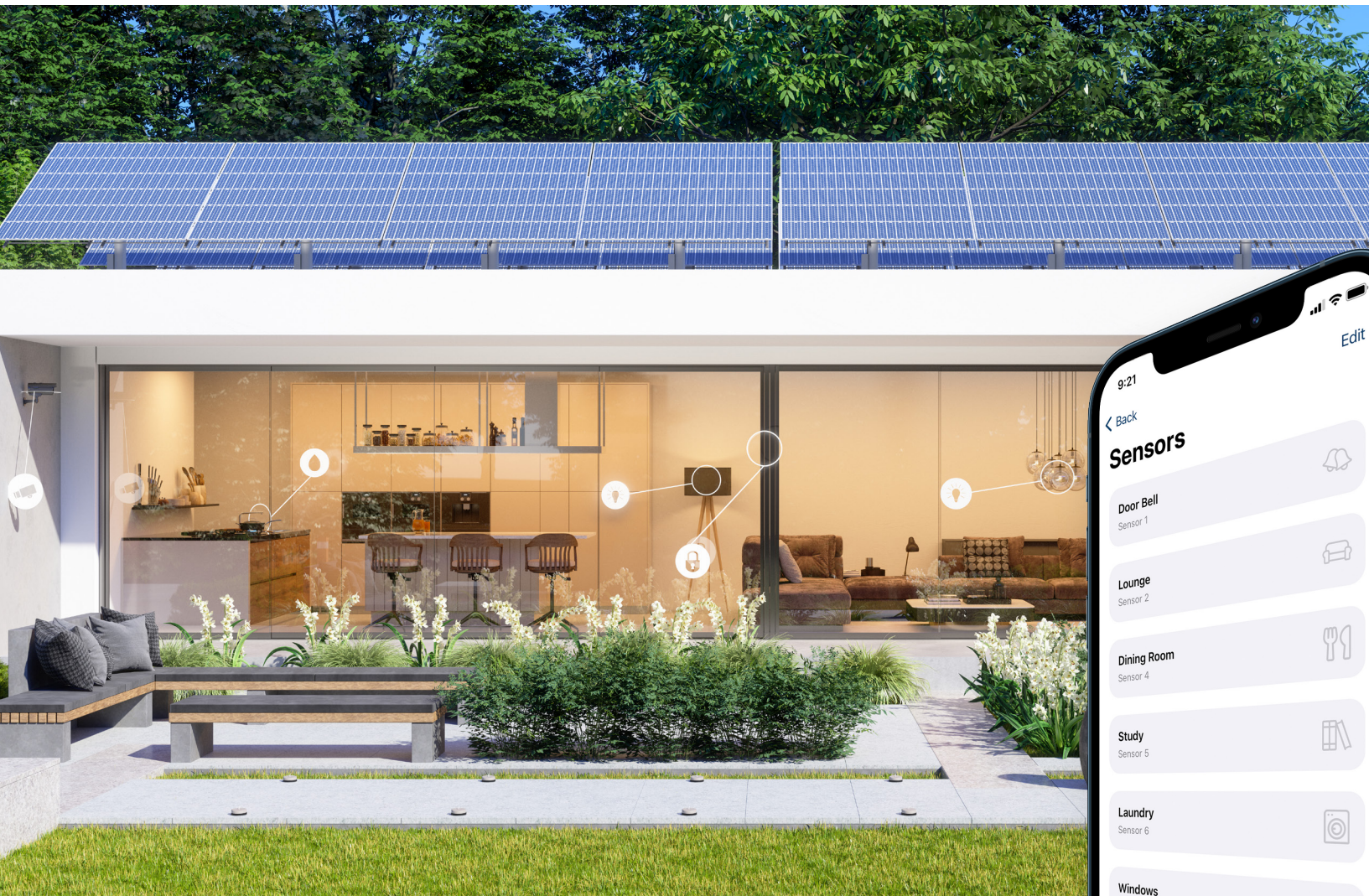


Arrowhead Alarm Products

Security & Control

# 2024 Infinity Series Catalogue



**Arrowhead**  
Alarm Products

Making every home & business smart, safe & secure



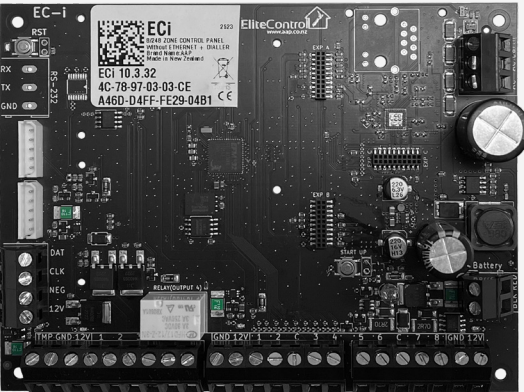
# Security & Control



Security for both domestic and commercial premises with integrated alarm, access and automation features

## EC-PCB

Infinity series control panel



### Features

- Ethernet (optional plug-in module)
- EliteCloud smartphone app (optional)
- EliteCloud dashboard (coming soon)
- Integrated access control
- Custom I/O programming
- Fire panel integration
- Infinity long range wireless
- RS232 (optional plug-in module)
- Home automation system integration
- PSTN dialler (optional plug-in module)

### Supports

248 inputs	32 keypads	32 time schedules	2000 users
32 outputs	32 partitions	32 access levels	10,000 events

EliteControl 'Infinity Series' provides an unprecedented level of alarm, access & automation integration. This flexibility makes the EC paramount for general residential to luxurious homes & small to medium commercial premises.

Infinity series is completely modular, creating a versatile solution that saves excess hardware & labour in every installation.



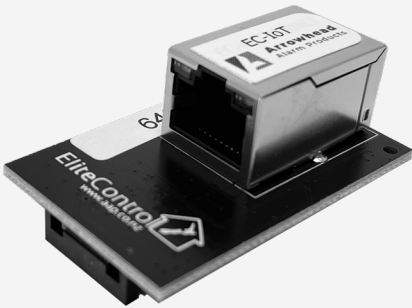
# Smartphone App & Monitoring



EliteCloud app & monitoring module for EC security systems

## EC-IoT

Plug on app & monitoring module



### Features

- System history
- Live sensor status
- User management
- Control up to 32 outputs
- Up to 10 sites per app user
- Up to 100 app users per site
- View & control up to 32 partitions
- Customisable favourites buttons
- Customisable push notifications
- Ongoing feature enhancement

Stay in touch with your home or business from almost anywhere. The EliteCloud app supports alarm, access control, monitoring & other control functions, along with custom push notifications directly to your Apple or Android smart device.

Manage friends, family or couriers from your app 'User list'. These people can then operate your alarm from their own smart device.

EliteCloud



Download on the App Store

GET IT ON Google Play

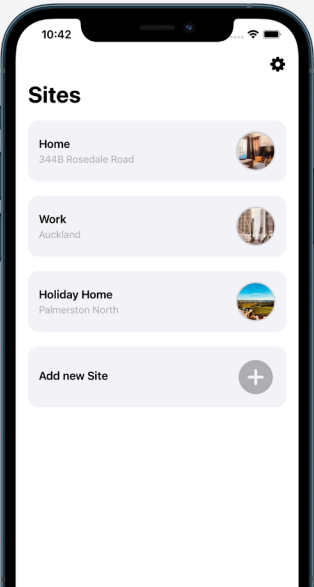


www.elitecloud.co.nz

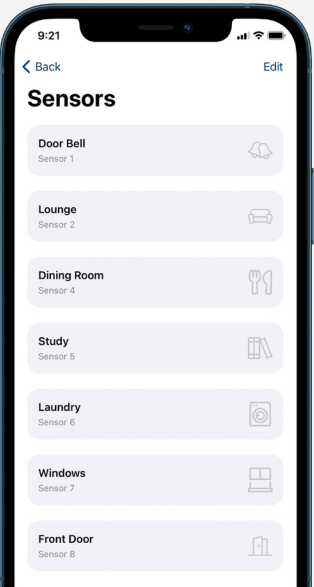
### Notifications



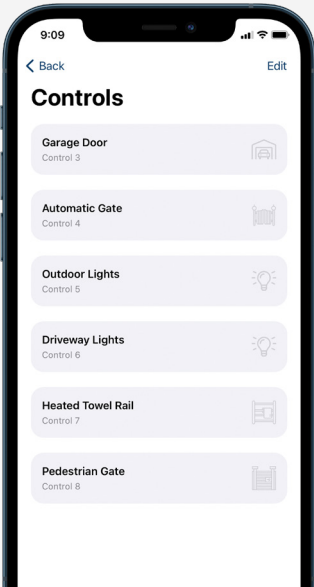
### Sites



### Sensors



### Controls



5 Year Warranty

New Zealand designed & manufactured security & control

5 Year Warranty

Security & control from almost anywhere at anytime

# Infinity Wireless

infinity series  
powered by EliteControl

Complete range of 2 way wireless for your EC System

Infinity series long range wireless allows installers to specify professional, correctly positioned products without excessive labour unpleasant trunking or conduit. With up to 500m range, almost any site can be accurately secured.

## infinity link

2 way wireless transceiver link module



## infinity motion

2 way wireless PIR motion sensor



## infinity remote

2 way wireless 4 button remote with haptic feedback

*\*also available to purchase as infinity remote kit\**



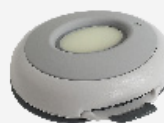
## infinity input

2 way wireless door & window contact



## infinity panic

2 way wireless button with haptic feedback



## Features

- Frequency: 915Mhz
- Simple installation
- Battery life up to 5 years
- Remotes provide haptic feedback
- Transmission range up to 500m
- Battery low, tamper & supervision

## infinity motion IP54

2 way wireless outdoor dual tech motion sensor



## infinity output

2 way wireless 1 channel relay output



## infinity siren

2 way wireless outdoor siren & strobe



# Infinity Keypads

infinity series  
powered by EliteControl

Combining sophistication & functionality, make your choice from our range of EC keypads



EC-TOUCH W



EC-TOUCH B

## EC-TOUCH

- Intuitive graphic user interface
- 5" touch display
- Sharp 800 x 480 pixels
- Simple surface mount installation
- Built in SD port for custom images
- SD card included
- Setup wizard for simple installation

## EC-LCD

- Multiple display/sleep options
- Aligns with many light switch plates
- Adjustable brightness & beep tone
- Simple surface mount installation
- Compatible with multiple alarm types
- Supports traditional 'address' programming



EC-LCD



EC-LCD PROX

EC-KP B



EC-KP W

## EC-KP

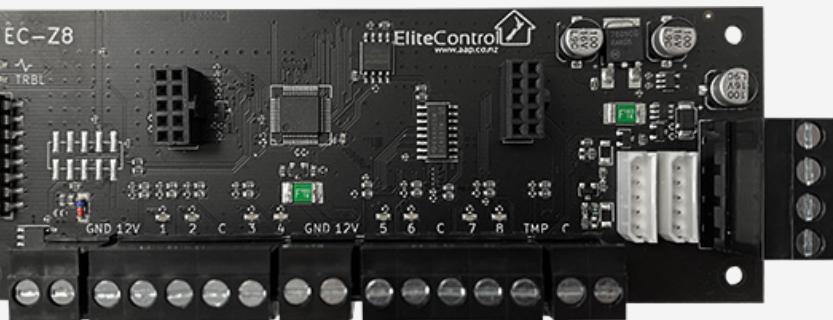
- Multiple display/sleep options
- Aligns with many light switch plates
- Adjustable brightness & beep tone
- Simple surface mount installation
- Compatible with multiple alarm types
- Supports traditional 'address' programming



# Expander Modules



Modular expansion to customise your system to meet your needs



## EC-Z8

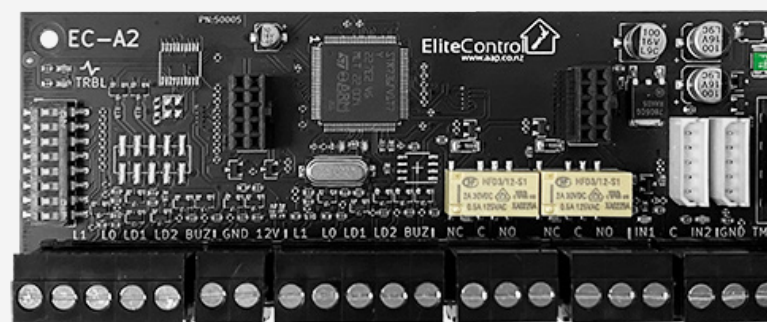
### 8 input expander module

- 8 configurable inputs
- 2 quick connect keypad bus sockets
- On board system tamper
- Add up to 30 x EC-Z8 modules to 1 x EC-PCB

## EC-A2

### 2 door access control module

- 2 proprietary wiegand inputs
- 2 configurable inputs (REX or custom)
- 2 configurable outputs
- Plug in terminals
- Add up to 32 x EC-A2 modules to 1 x EC-PCB



## EC-O4

### 4 output expander module

- 4 configurable outputs
- 2 quick connect keypad bus sockets
- On board system tamper
- Add up to 8 x EC-O4 modules to 1 x EC-PCB
- Plug in terminals

# Accessories



Consider adding any of the following accessories to your EC system

## Remote Control



Stylish 4 button remote with up to 500m range and haptic feedback. Operate garage doors, gates, lights & more

## Integrated Access Control



Arm/disarm, control gates, doors, lights & more with our indoor/outdoor keypad readers

## APP Integration



*App & Smartphone sold separately*

Control your system from your smartphone. Arm/disarm, control, history, live sensors & notifications

## Wireless Control



Wireless switching of garage doors, gates, lights & more when connected with the EliteControl system

## Siren Options



We stock a range of external & internal sirens, including surface & flush mount options

## Keypad Options



Combining a sophisticated aesthetic with functionality, the EliteControl series keypads have you covered

## Sensors



Select from our range of indoor, outdoor, wired & wireless detectors. Options are available for both domestic & commercial applications

## Smoke Detectors

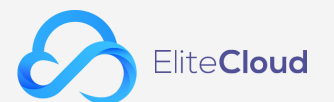


Integrate wired & wireless solutions for heat & smoke detection. Inter-connectable hardwired & wireless options available

## Electronic Locking



Indoor & outdoor locking devices for EliteControl access control. Integrated door position monitoring also available



# Arrowhead Alarm Products

100% New Zealand Owned & Operated

Innovative Security

Arrowhead Alarm Products was established in 1986 with a philosophy to provide top quality security equipment with an emphasis on expert back up and support. The Elite security and control system is designed and manufactured in our purpose built facility located in Silverdale Industrial Park.

On-site we have a specialised team of software and hardware engineers complimented by our lead free high speed pick and place manufacturing plant and multi stage quality control system. Each and every product we manufacture is also tested in house. This start to finish process makes us so confident that we put a 5 year warranty on every product we build. Our exclusive on-line technical support library and factory trained engineers provide unprecedented support for our loyal technicians.

Phone: (09) 414 0085

Website: [www.aap.co.nz](http://www.aap.co.nz)

1A Emirali Road, Silverdale, 0932, Auckland,  
New Zealand

For all Tech Sales Enquires

Jeremy Skinner: [jeremy@aap.co.nz](mailto:jeremy@aap.co.nz)

Roman Jacobs: [roman@aap.co.nz](mailto:roman@aap.co.nz)

For all orders

[orders@aap.co.nz](mailto:orders@aap.co.nz)

For all Tech Support Enquires

[tech@aap.co.nz](mailto:tech@aap.co.nz)

Sales Manager - Matt Hobson

[matt@aap.co.nz](mailto:matt@aap.co.nz)

027 588 9844

Lower North Island Sales Representative - Mark Kidd-Anderson

[mark@aap.co.nz](mailto:mark@aap.co.nz)

027 269 6602

South Island Sales Representative - Nicky Foden

[nicky@aap.co.nz](mailto:nicky@aap.co.nz)

022 105 3589



**Arrowhead**  
Alarm Products